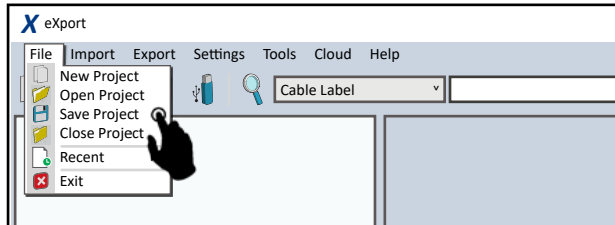
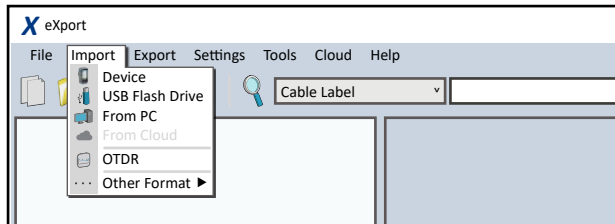





4. PC SOFTWARE eXport

1. Launch eXport software.
2. Create a new project by going to [File] → [New Project] or click 

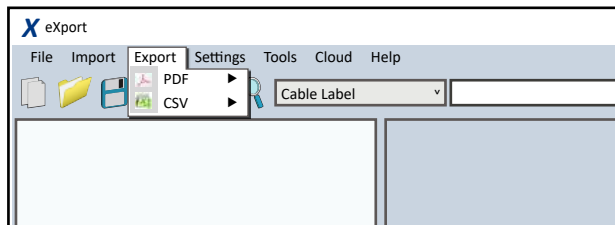


3. To import saved results, go to



- [Import] → [Device] for direct USB connection or click 
- [Import] → [USB Flash Drive] for importing from USB flash drives or click 
- [Import] → [From PC] for importing from local hard drives 

4. To export saved results, go to



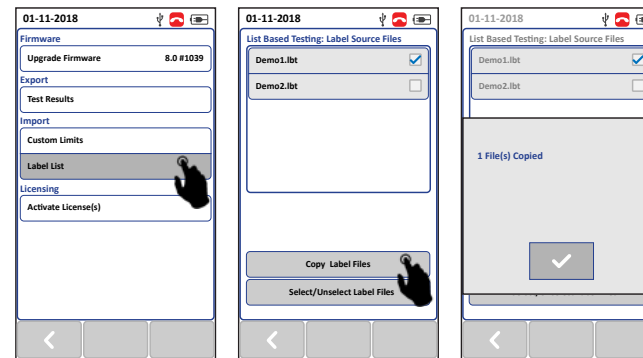
- [eXport] → [PDF] to export selected test result(s) in summary or detail.
- [eXport] → [CSV] to export selected test result(s) in summary or detail.

5. To view detailed results, double click on the cable label and a new window with comprehensive results and plots will be opened.

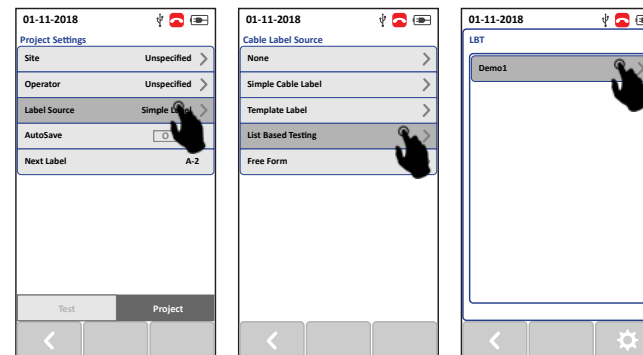
LIST BASED TESTING

To load label list

1. Insert USB flash drive to the LOCAL unit.
2. Select [Label List] and select the label list you want to import.
3. Select [Copy Label Files].



4. Press the [SETUP] button → [Project Settings] → [Label Source]
5. Select [List Based Testing] and select the label that has just been imported.



6. Press the [AUTOTEST] button to view list and select label for test.
7. A **PASS** or **FAIL** result will be indicated after every test.

To get in touch with us, please use our contact form on itnetworks.softing.com

©2019 Softing IT Networks GmbH. In line with our policy of continuous improvement and feature enhancement, product specifications are subject to change without notice. All rights reserved. Softing and the Softing Logo are trademarks or registered trademarks of Softing AG. All other trademarks, registered or unregistered, are sole property of their respective owners.

WireXpert4500_FiberMPO_IT_EN_QSG_201811

WireXpert



Multi Mode
MPO Adapter Kit

KIT CONTENTS

MPO Adapter Kit (WX_WX_AD_MM_MPO_KIT)

- Single Light-source MPO/MTP adapter labelled LOCAL
- Single Power-meter MPO/MTP adapter labelled REMOTE
- A pair of Unpinned-Pinned Type-A Launch/Receive Cords (2m)
- Single Unpinned-Unpinned Type-A Test Cord (0.5m)
- Single Unpinned-Unpinned Type-B Test Cord (0.5m)
- A pair of Type-A couplers
- Single one-click MPO/MTP cleaning kit



The product shall only be used within the conditions listed in the main manual and datasheet.
Please consult the main manual and datasheet for more details.

IT Networks



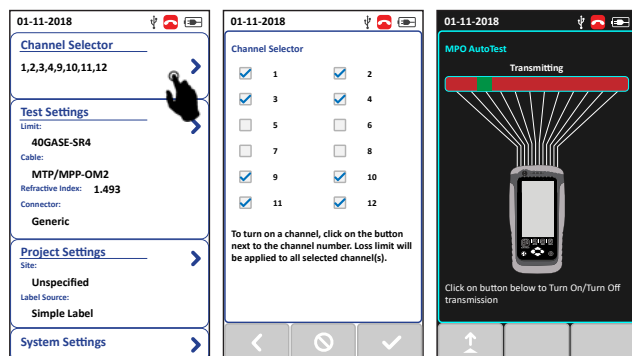
MPO Test Kit
Quick Start Guide

itnetworks.softing.com/WX4500



1. SETUP

> CHANNEL SELECTOR



Go to Channel Selector to manually select or deselect channel(s). Loss Limit will be applied on during an AUTOTEST after selecting the Test Limit.

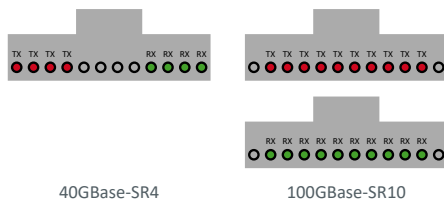
Ensure the REMOTE unit is in Light Source mode by pressing the AUTOTEST button. Ensure light source is switched on by pressing the button.

> TEST SETTINGS

Selecting Test Limit

Go to [Test Settings] → [Network Limits]. Select 40GBase-SR4 to transmit and receive using 4 channels each with a MPO ribbon. Channels 1, 2, 3, 4, 9, 10, 11 and 12 will be selected. Select 100GBase-SR10 to transmit and receive using 10 channels each with a 24 channels MPO cable. Channels 2 to 11 will be selected.

Selecting Cable Type



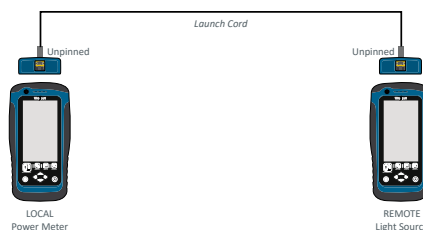
Go to Test Settings → Cable → Generic MMF to select cable type. Select OM2, OM3 or OM4 to set grade of MPO cable under test.



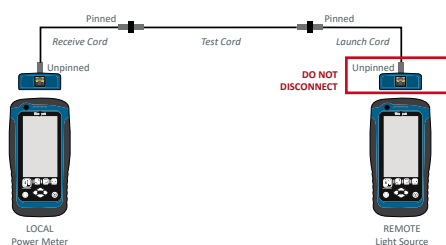
2. SET REFERENCE

Test cord insertion loss verification

1. Connect the unpinned ends of the Launch Cord (LC) to the LOCAL and REMOTE units.
2. Press the [TOOLS] button → [SET REFERENCE] and press the [OK] button to perform set reference.
3. Disconnect LC from LOCAL unit.



4. Do not disconnect LC from the REMOTE unit.
5. Connect one unpinned end of Receive Cord (RC) to the LOCAL unit and the other end to the pinned end of Test Cord (TC).
6. Press the [AUTOTEST] button to perform an AUTOTEST.
7. Check that the result is less than the acceptable loss limits in Table 1.



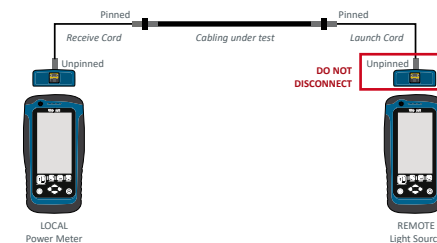
Termination 1	Termination 2	Attenuation Requirement
Reference Grade	Reference Grade	≤ 0.1dB
Reference Grade	Standard Grade	≤ 0.3dB
Standard Grade	Standard Grade	≤ 0.5dB

Table 1



AUTOTEST

3. AUTOTEST



Pinned-to-Pinned Link

One-cord reference test method

1. Repeat insertion loss verification steps 1 to 4.
2. Connect one unpinned end of RC to the LOCAL unit and the other end to the pinned end of cabling under test.
3. Connect the other unpinned end of LC to the pinned end of the cabling under test.
4. Press the [AUTOTEST] button to perform an AUTOTEST.

Pinned-to-Pinned Channel

1. Continuing from step 7 of insertion loss verification test.
 2. Interchange the ends of the TC.
 3. Press the [AUTOTEST] button to perform an AUTOTEST.
 4. Check that the result is less than the acceptable loss limits in Table 1.
- The following steps are optional but recommended.
5. Interchange the ends of the RC.
 6. Press the [AUTOTEST] button to perform an AUTOTEST.
 7. Check that the result is less than the acceptable loss limits in Table 1.
 8. Interchange the ends of the LC.
 9. Press the [AUTOTEST] button to perform an AUTOTEST.
 10. Check that the result is less than the acceptable loss limits in Table 1.

Three-cords reference test method

11. Press the [TOOLS] button → [Set Reference] and press the [OK] button to perform set reference.
12. Replace the TC with cabling under test.
13. Press the [AUTOTEST] button to perform an AUTOTEST.

WARNING: Always use a coupler when mating a pinned and unpinned connector. Mating two pinned connectors with a coupler will damage the pins.